

# HOLT & DISTRICT FARMERS' CLUB

FOUNDED 1948

*President:* Bill Poortvliet

*Chairman:* Pat Cubitt

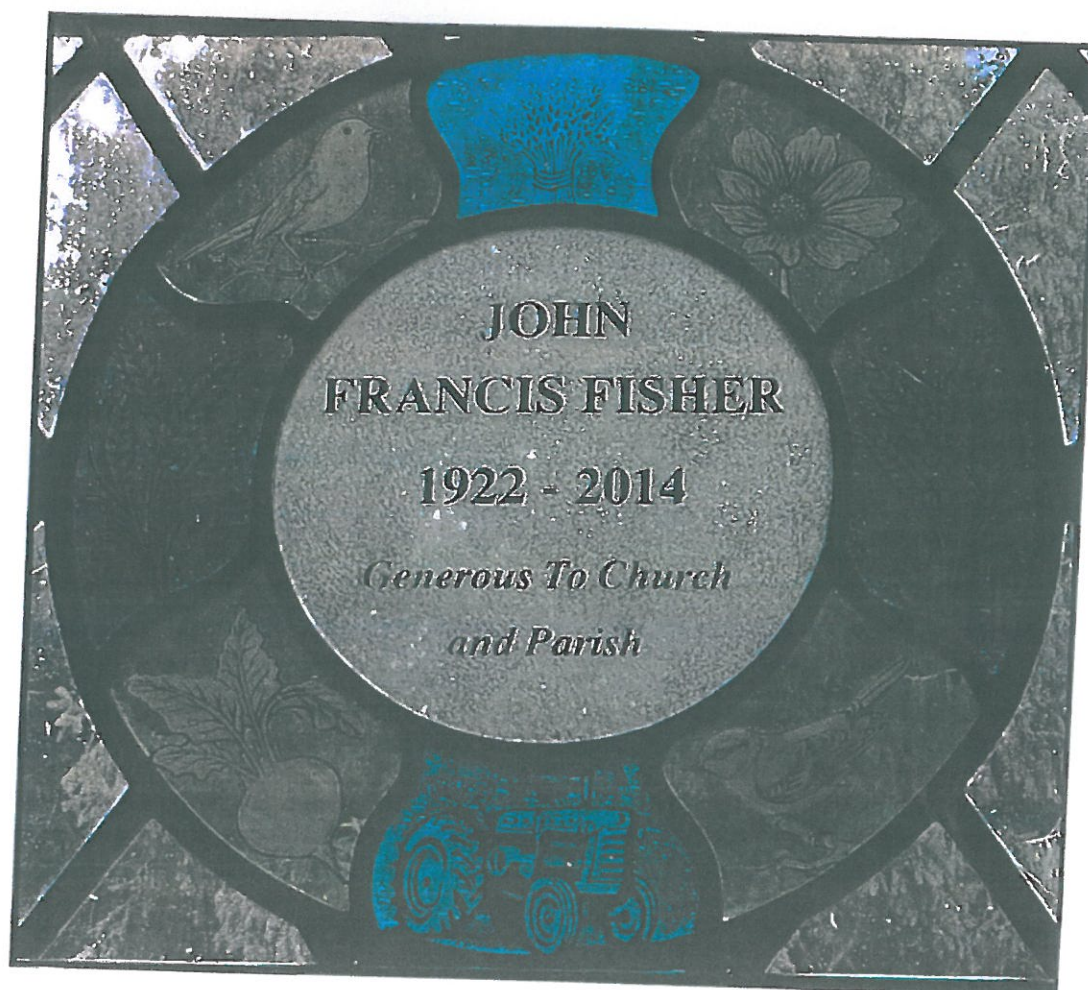
*Vice Chairman:* Andrew Ross

[www.holtfarmers.club](http://www.holtfarmers.club)

## CLUB MATTERS

### Easter 2020

Throughout history Norfolk has attracted successive 'offcumduns' (Yorkshire for migrants) and invaders including Vikings, Danes and Normans, Angles and Saxons, Huguenots and Flemish. Then there have been the Scots who drove their cattle over the Hambleton Hills and The Wolds into East Anglia and the Home Counties until the railways arrived. The Scots then started to bring their wives and these included Frank Fisher who came from central Scotland in 1908 to buy Corpusty Mill. He features in the attached photo overseeing the adjacent bridge when it was washed away in 1912 as I related on the hundredth anniversary. Another photo shows the extraordinary sight of the suspended tracks when Blackwater Bridge, two miles further up the Bure, was also swept away. This is next to Holly Heath Farm which is where Frank's grandson **John Fisher**, our late member, was born in 1921. The Fisher family then bought Rookery Farm at Thurning, a mile further upstream, in 1928 and this is where John's widow Ada still leads an active life in her mid nineties.

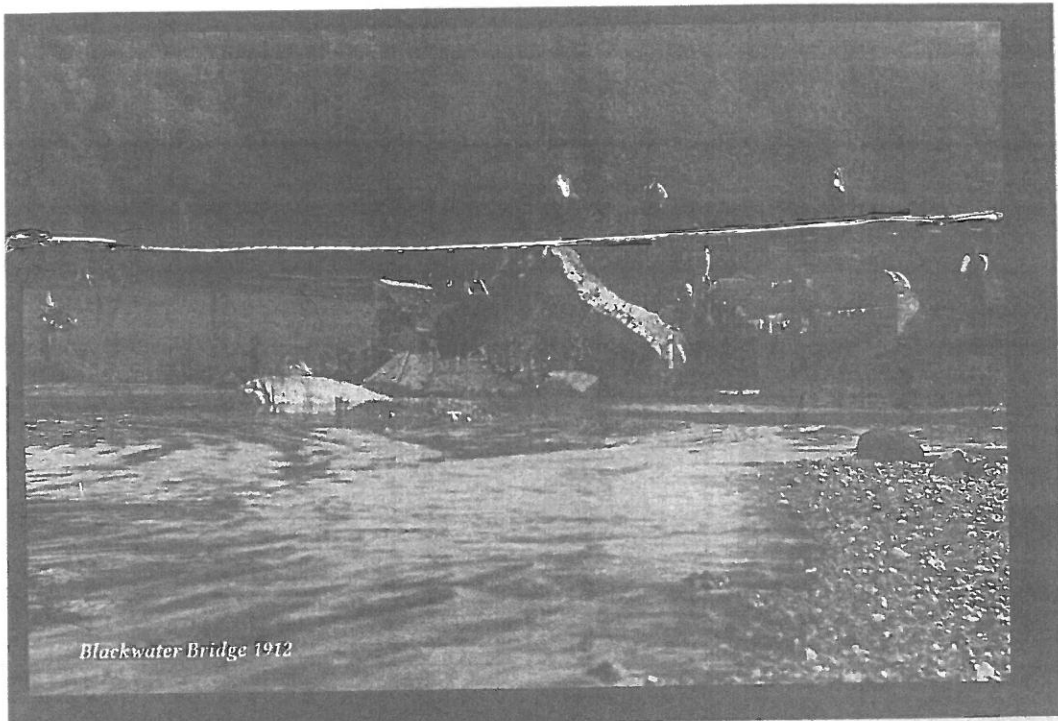


CORPUSTY  
BRIDGE



AUGUST  
1912

John died in 2014 and is commemorated in Thurning Church which is the most charming little building with box pews from Corpus Christi College, Cambridge. These were allocated to the local gentry and upper tenantry with Rookery Farm included. The farmhouse here is another Listed Building which gained recognition in 1980 when Anglia TV filmed *Parson's Pleasure*, an episode of Roald Dahl's *Tales of the Unexpected*, featuring the theatrical knights John Gielgud and Bernard Miles. This is easily found on t'internet and tells a rueful story of a 'knocker' and a Chippendale 'commode'. The adjacent Lime Tree Farm was also used for filming and this was where Francis Key, previously Geoffrey Harrold's manager in Ireland, kept horses and native cattle. His daughter Gillian now lives with **Martin**, John Fisher's younger son, who runs Rookery Farm with his own son Andrew. Martin's daughter Georgina (pictured with husband Alex Harper) has just given birth to Harry who is therefore Frank's great great great grandson and scion of the Fisher clan. There are already two other great great grandchildren (with another on the way apparently) as Martin's twin sister Anne is married to **Peter Perry-Warnes** and our past Chairman is shown presenting Martin with a malting barley prize in 2014. Peter farms only two miles to the south at Tyby and both he and Martin are regular winners on this strong land which has also produced monster beet (see next page).



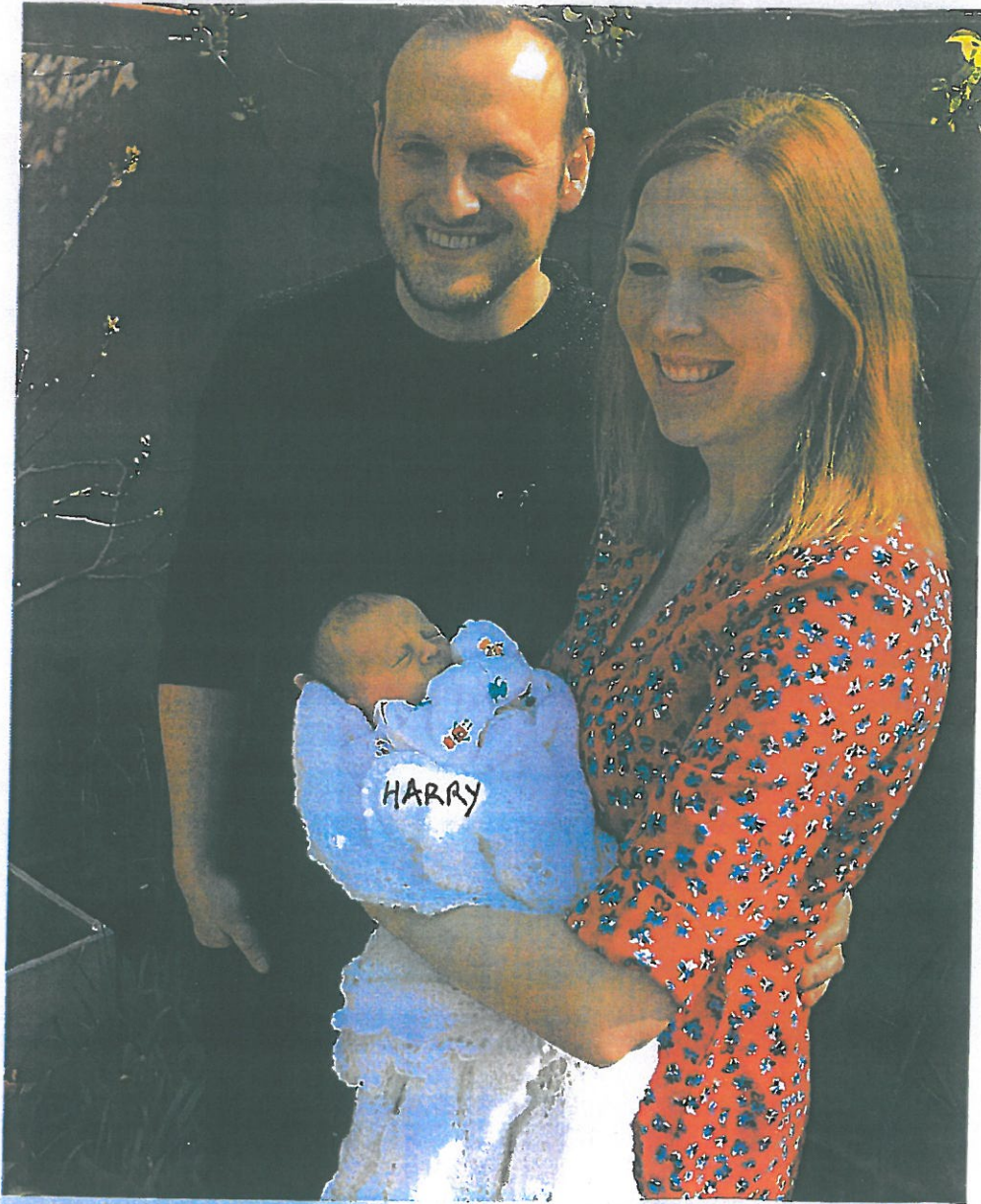
BLACKWATER  
BRIDGE

AUGUST  
1912

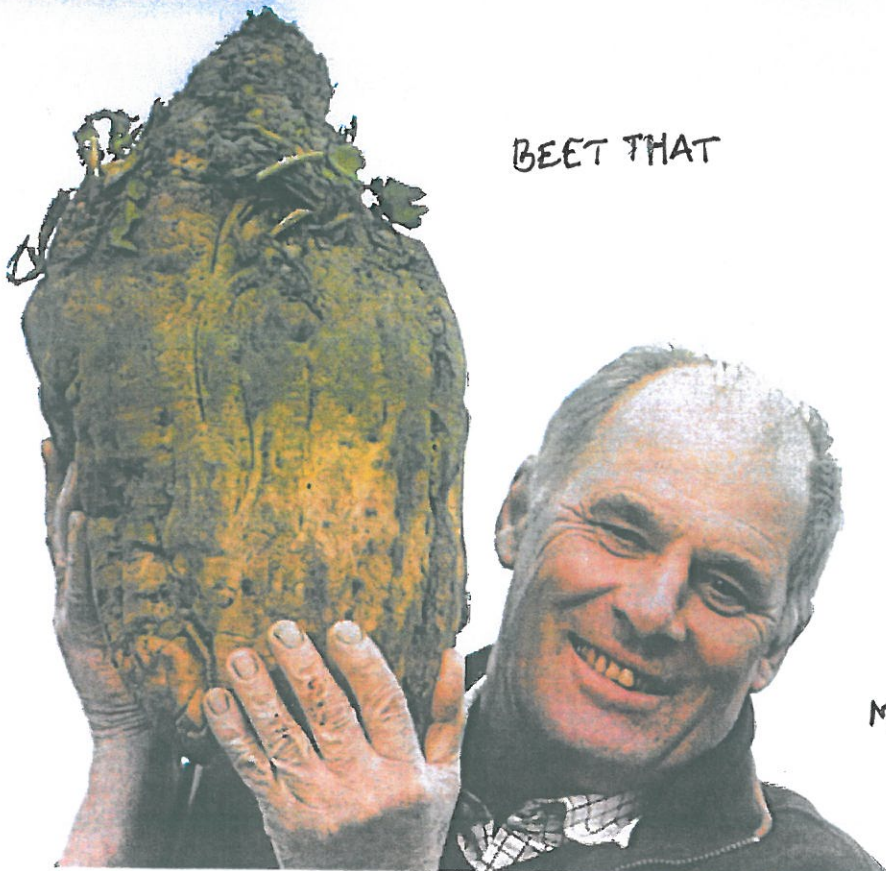
Blackwater Bridge 1912

THE HARPERS

ALEX



GERALDINE



BEEF THAT

MARTIN FISHER



PETER PERRY-WARNES

2014

MARTIN FISHER

Further neat connections include the fact that Westover vet Tom Hume, former colleague of Graham Duncanson, bought Lime Tree Farm after Francis Key died in 2011. Tom, who runs small herds of Simmental cattle and Oxford Sandy & Black pigs, is an outrageous omnivore and occasional Aldborough cricketer. Richard Fisher, Martin's elder brother, switched careers to a player/manager role at Aldborough where he has played on The Green for over fifty seasons and he reached three score years and ten on April Fool's Day. He is Club Chairman while **Billy Hammond** is still going strong as President and **Matt Skinner** is Club Captain. It is interesting to reflect that within a dozen years of migrating south Frank Fisher and his family had to face flood, war and pestilence in the form of the Spanish Flu outbreak. A century later young Harry has been born during another global pandemic and, whether or not he grows up to be a farmer, I trust he will join you in treating those three imposters just the same. After all, as farmers, you are experts at working from home.

Hon. Secretary: Tim Nicholson 1a Market Place Holt Norfolk NR25 6BE Tel. 01263 711167 (work)  
email: [tim\\_nicholson@ymail.com](mailto:tim_nicholson@ymail.com)

Hon. Treasurer: Tony Williams Red Roofs Ipswich Road Newton Flotman Norwich Norfolk NR15 1PN  
Mob. 07818 017864 email: [tony.williams@brandiston.co.uk](mailto:tony.williams@brandiston.co.uk)